

YOUR SEARCH FOR AN OFFSHORE
PARTNER ENDS HERE!



HIRE GLOBAL SUBJECT MATTER EXPERTS REMOTELY
TRANSFORM YOUR LOCAL BUSINESS THROUGH OUR OFFSHORE SERVICE CENTRES.
TAILOR MAKE YOUR TEAMS & SERVICES SETUP
SAVE UP TO 40% OF YOUR OPERATIONAL COSTS!

YOUR WIN-WIN SCENARIO

GO NO FURTHER, IF YOU ARE LOOKING TO DO THE BELOW, IN YOUR ORGANISATION:



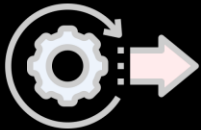
INCREASE SAVINGS : EXPAND YOUR CURRENT TEAM CAPACITY WITH UPTO 50% LESS MONTHLY COST



INCREASE CAPACITY : OFFLOAD YOUR CURRENT TEAM WITH EXACT SKILLSET TO A REMOTE TEAM



INCREASE REVENUE & BUSINESS : TAKE ON MORE PROJECTS THAN BEFORE



INCREASE OUTPUT AND DELIVERY : USE THE GEOGRAPHICS TO YOUR ADVANTAGE WITH TEAMS WORKING ROUND THE CLOCK



GROW YOUR FOOTPRINT : LOCAL AND GLOBAL WITH NEW PARTNERSHIPS THROUGH US

WHO CAN TAP INTO THIS MODEL?

YOU CAN BE ANY ENTERPRISE WHO ARE LOOKING TO OFFSHORE WORK ON A REGULAR BASIS TO A TEAM OF EXPERTS WHO REPORT TO YOU DIRECTLY BUT ARE ON OUR PAYROLL.



DOMAINS *(See Slide5)*

ENGINEERING DESIGN | HEAVY ENGG DESIGN

ARCHITECT FIRMS, DESIGN AGENCIES, CREATIVE AGENCIES, CONSTRUCTION HOUSES, COMMERCIAL ORGANISATIONS WORKING IN DESIGN... INFACIT ANYONE WHO ARE LOOKING FOR SKILLED EXPERTS!

SUSTAINABILITY

ENERGY & SUSTAINABILITY EXPERTS FOR MODELLING AND ADVISING & ASSISTING FOR LEED AND WELL CERTIFICATIONS



TYPE OF ROLES WE CAN OFFER

ENGINEERING DESIGNERS
SUBJECT MATTER EXPERTS WITHIN DESIGN
ARCHITECTS
SOFTWARE DESIGNERS



DURATION

HIRE MAN-HOURLY FOR PROJECTS, SHORT TERM OR LONG TERM

HOW CAN WE REALISE IT

CHOOSE WHAT WORKS BEST FOR YOU

1

HIRE **EXPERTS** FROM OUR TEAM WHO WORK FOR YOU REMOTELY AT A COST **SAVING OF UPTO 40%*** OF YOUR LOCAL COST

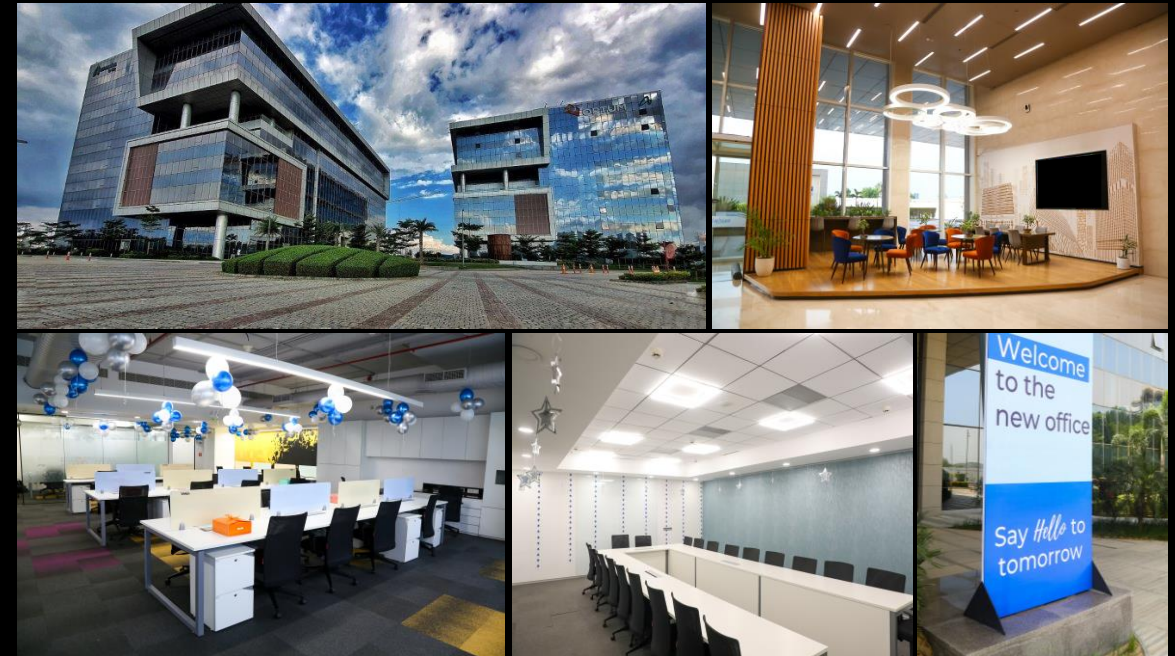
YOU SELECT & **MANAGE THEM DIRECTLY** AS PART OF YOUR VIRTUAL TEAM



2

SETUP YOUR **NEW OFFSHORE OFFICE/CENTER** IN INDIA ; DEDICATED TO YOUR OPERATIONS, **SAVINGS UPTO 50-60%***

YOU SELECT & **MANAGE THE CENTER DIRECTLY** AS PART OF YOUR NEW OFFICE OPERATIONS



* As per projects we have executed and delivered depending on operational requirements

Actual Office Location in Gurugram, India | 20 minutes from New Delhi Airport | Ready to move in !

BIM & ENGINEERING DESIGN SERVICES

Construction Services

- BIM Design Services – Structural, Architectural & MEP
- 3D Modeling (LOD 200,300,500).
- BIM 360 Collaboration
- Integrated 3-D Models for all services (REVIT)
- Composite structural design & Analysis
- HVAC system – Sizing & ducting layouts
- Plumbing and fire-fighting systems
- Electrical wiring system layout
- 3D Rendering of Exteriors & Interiors
- 3D Models and structural designs, using Industry standard software's
- CAD Drafting | SCAN to BIM CAD Conversion

ENERGY & SUSTAINABILITY SERVICES

Sustainability Consulting and Advisory Services

- Green Energy/Green Ratings, Green Products and Services including Environmental Management, Urban Planning and Architectural Design.
- Green Building Certification and Energy Star Ratings Services.
- Decarbonization consulting services.
- Climate Change research studies & Environment impact Assessment Reports.
- Township & Built Environment Sustainable Design.
- Municipal Demand Side Management.
- Education and Trainings.
- Energy Efficiency Products & Services.
- Renewable Energy Technology projects, Carbon Emissions & Trading, and, sustainable Reporting practices.
- Certification Services for Leadership in Energy Environment Development (LEED), National Green Rating for Integrated Habitat Assessment (GRIHA), BEE Star Labelling for commercial and public buildings, Project Management, ISO 50001, and Energy Conservation Building Code (ECBC) for the given Building/Facility.

HEAVY ENGINEERING DESIGN SERVICES

Chemical Plants | Oil & Gas | Pure Water Services

- Oil & Gas Upstream Services.
- Chemical Plants & refineries related Services; Complete detailed engineering for the plant 3D design including structural design for pipe supports and equipment foundations, equipment sizing and datasheets, vessel design (as per relevant code – ASME, TEMA, API etc.), piping isometrics, as well as project documents.
- Pure Water – Water desalination, Waste water management, waste disinfection, Water Purification.
- Designing & Modelling works – Pressure Vessels, 3D CAD, CAD/CAE, Plant 3D, FEA/CFD.

RECRUITMENT SERVICES & OFFSHORE TEAM SETUP

Permanent Placements | Consulting Assignments | Bulk Hiring & Staffing

- Hire full-time or part-time Employees from a low-cost country, even if you don't have a footprint as we cover global hiring – both long term & short term and provide full HR, payroll and Financial Services.
- Consulting Assignments – long term or short term (3-6 months or longer).
- Hire a FULL TEAM and get a Team Lead to manage your team – remotely and virtually.
- Local Placements of permanent hires within Europe, Asia & Middle East with 100% success rate due to our global head hunter network.
- Bulk Hiring and migration support Services.
- We provide even Bulk hiring for Blue Collar work force through our partnerships in India.
- Tailor Make your team setup and combine them with any type of services you want them to work on – we can create bespoke solutions that fits perfectly with your organisation, operational strategy & cost.

COMPLEMENTARY SERVICES

CANNOT FIND THE SERVICES YOU WANT? PLEASE TALK TO US!



Through our Extensive Partner Network we can develop bespoke solutions as per your requirements

MAKING POSITIVE IMPACTS ON A GLOBAL SCALE



BIM DESIGN
ENERGY & SUSTAINABILITY
OIL & GAS



BIM DESIGN
ENERGY & SUSTAINABILITY



BIM DESIGN
ENERGY & SUSTAINABILITY
OIL & GAS

OUR CUSTOMERS

Shared under NDA.
Not allowed to share forward without permission.



SERVED THROUGH OUR PARTNER NETWORK

OFFSHORE DEVELOPMENT CENTERS

8 OFFSHORE DEVELOPMENT CENTERS (ODC) ACROSS INDIA (~300 HCs)

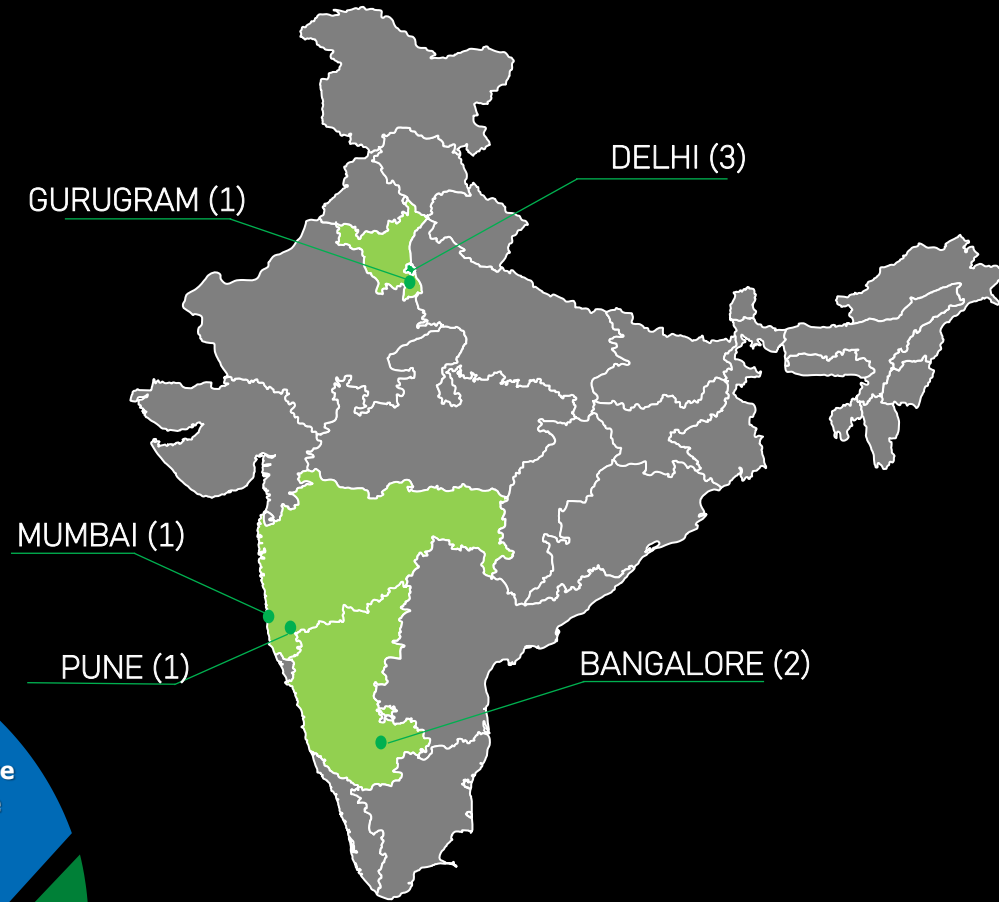
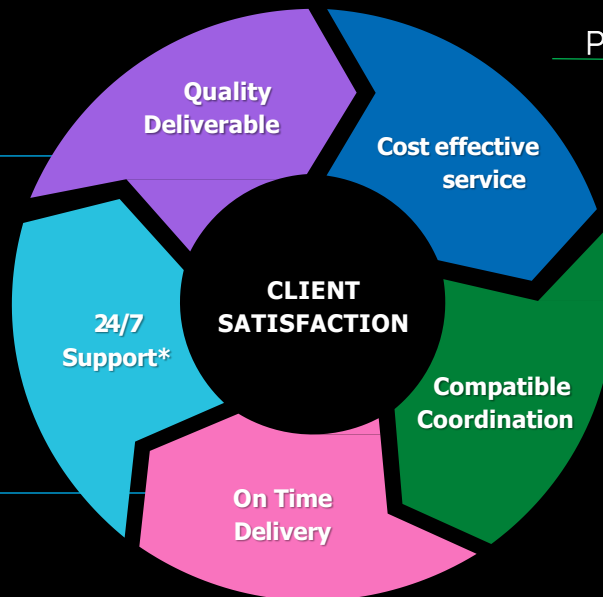
5 KEY PARTNERSHIPS GLOBALLY

10 KEY PARTNERSHIPS LOCALLY IN INDIA

15 ODCs BY 2024 Q4 (ACCESS TO ~1000 HCs)

Covering Core Services:

- BIM & Engineering Design Services
- Heavy Engineering Design Services
- Energy & Sustainability
- Software Development – 3D, AR/VR Rendering
- ELV Design Services



HOW IT WORKS

1

DECIDE THE MODEL

CHOOSE BETWEEN:

- 1) HIRE REMOTE EXPERTS OR A TEAM
- 2) SETUP A DEDICATED OFFSHORE CENTER IN INDIA

2

DECIDE THE SERVICES

CHOOSE ONE OR MORE:

- 1) BIM & ENGINEERING DESIGN
- 2) HEAVY ENGINEERING DESIGN
- 3) ENERGY & SUSTAINABILITY
- 4) SOFTWARE DEVELOPMENT & OTHER SERVICES

OR TALK TO US FOR A BESPOKE SOLUTION

3

REVIEW, SELECT, HIRE & BUILD YOUR TEAM

YOU PROVIDE US THE REQUIREMENTS

WE FIND THE PROFILES, YOU REVIEW, INTERVIEW & SELECT

WE ONBOARD ON YOUR BEHALF

4

SCALE, EXPAND & START SAVING

OVER THE YEARS, WE HAVE SEEN COST SAVINGS UPTO 40% ON REMOTE HIRES & UPTO 60% ON DEDICATED OFFSHORE CENTERS

5

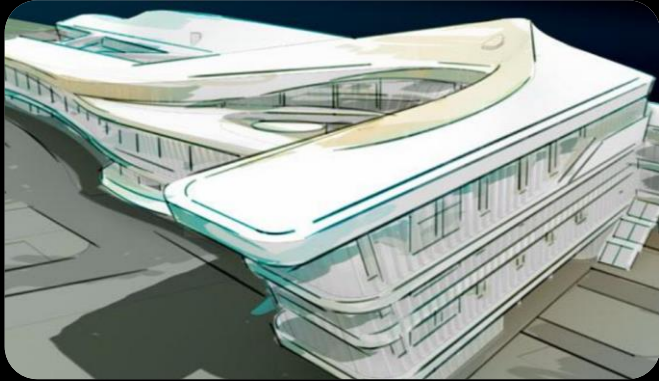
MANAGING YOUR OWN OFFSHORE CENTER *

- PLAN YOUR VISIT
- MEET THE CENTER EXECUTIVES
- REVIEW THE LOCATION & ENVIRONMENT
- PLAN YOUR NEW OFFICE
- MEET RECRUITS
- KICK OFF OPERATIONS

* Only applicable if you choose to setup a dedicated offshore center

BIM DESIGN SERVICES

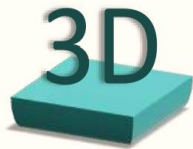
TEAM OF 50+ DESIGN SMEs
READY TO HELP YOU TODAY!



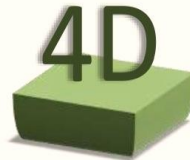
- SJSGLOBAL is your one stop shop for Offshoring ALL BIM design works with focus on client requirements with hands on and innovative approach to all prospective clients.
- We at SJSGLOBAL pride ourselves with having Engineers, from the Mechanical, Electrical ,Structural and Building Services Engineering industry, with a cumulative professional experience more than 30 years, who have served at senior positions in various organizations in India and overseas.



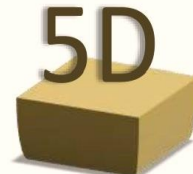
DIMENSIONS SERVED



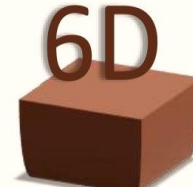
A 3D rendered representation of the various Construction elements.



3D BIM + Linked Construction Schedule Information



3D BIM + Schedule information + Cost Estimation



Includes Energy Simulation and Analysis



Includes Post-construction Information such as asset condition and maintenance requirements

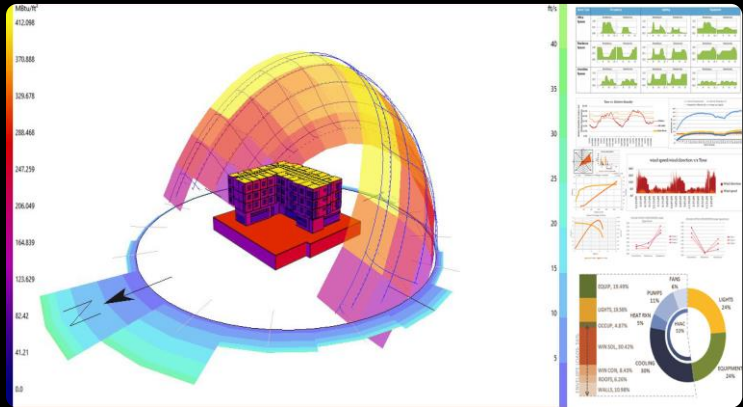


ENERGY & SUSTAINABILITY SERVICES

TEAM OF 50+ DESIGN SMEs
READY TO HELP YOU TODAY!



- SJSGLOBAL is your one stop shop for Offshoring ALL Energy & Sustainability Services Incl Energy Modelling/Simulations, consulting and advising you with Energy Certifications.
- Talk to us regarding GREEN BUILDINGS Certifications, Climate and Net Zero DECARBON Advisory, Sustainable Finance and Green Bonds.
- We at SJSGLOBAL pride ourselves with Senior Experts with Energy & Sustainability with a cumulative professional experience more than 50 years, who have served at senior positions in various organizations in India and overseas and are engaged today in advising Govt projects across Indian & Asian Subcontinent.



Designing Integrated Clean Energy, Efficiency Solutions, Simulations and Energy Reports



Strategic Planning for Carbon Advisory, GREEN Bonds, Sustainable Finance, Net Zero Goal Planning, Smart City Strategic Planning, Tender Documentation, Data Analytics and IT Business Support



LEED & WELL Certification Process

HEAVY ENGINEERING SERVICES

TEAM OF 50+ DESIGN SMEs
READY TO HELP YOU TODAY!



- SJSGLOBAL is your one stop shop for Offshoring ALL Heavy Engineering design works with focus on client requirements with hands on and innovative approach to all prospective clients.
- We at SJSGLOBAL pride ourselves with having Engineers, bringing Combined Design Expertise within Construction, Oil and Gas Industry, plants and refineries, chemical Industries, water treatment systems, as well waste management systems with a cumulative professional experience more than 60+ years, who have served at senior positions in various organizations in Asia, Middle East and the US..



SAMPLE PROJECTS



LOCATION: MIDDLE EAST
AREA: 5,270 SQM



LOCATION: MIDDLE EAST
AREA: 80,00,000 SQM



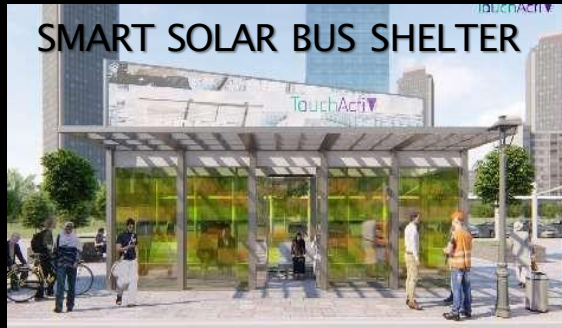
LOCATION: USA | AREA: 14,000 SQM



LOCATION: MIDDLE EAST , AREA: 61,000 SQM



LOCATION: MIDDLE EAST
AREA: 200,000 SQM



LOCATION: MIDDLE EAST, TYPE: MOCK UP



LOCATION: USA
AREA: 17,000 SQM



LOCATION: USA, AREA: 20,400 SQM

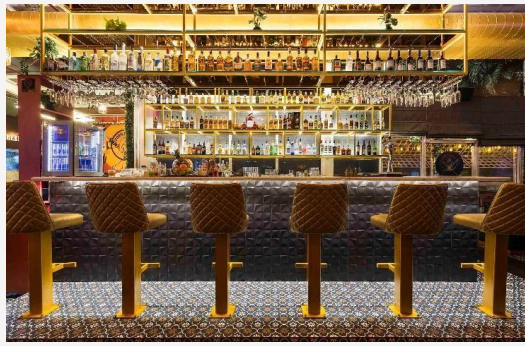
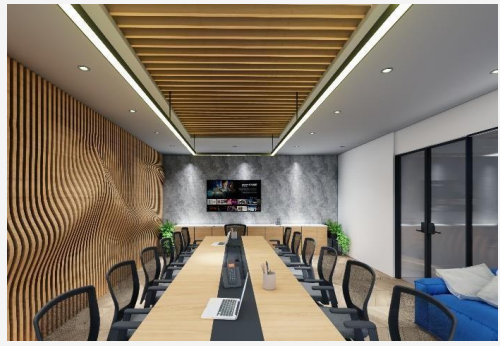
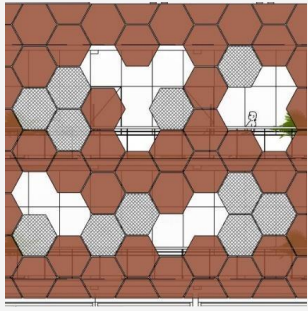
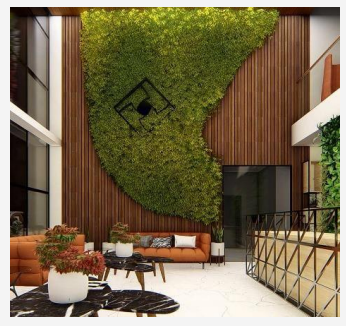
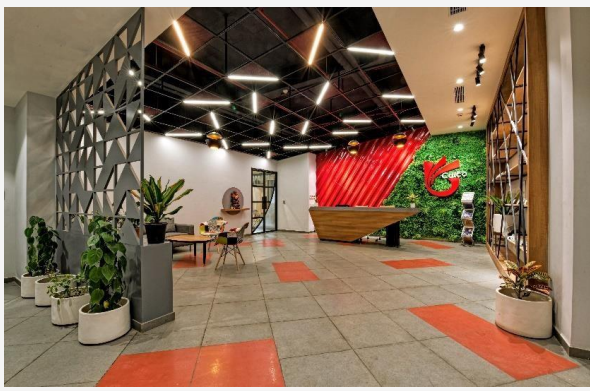


LOCATION: MIDDLE EAST, AREA: 15,000 SQM

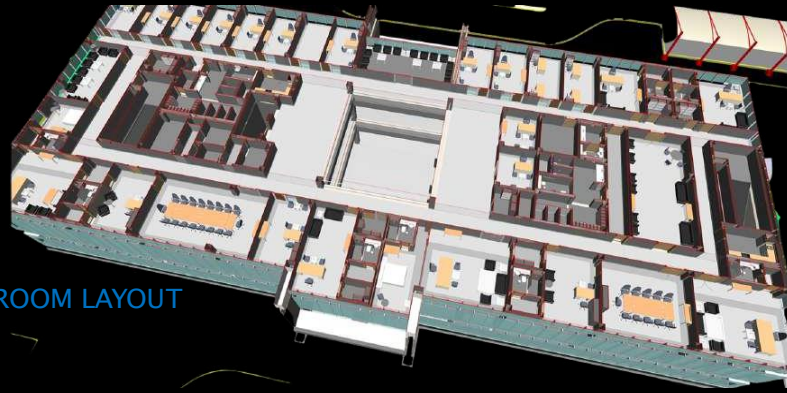


LOCATION: USA, AREA: 210 SQM

SAMPLE PROJECTS



SAMPLE PROJECTS



3D ROOM LAYOUT



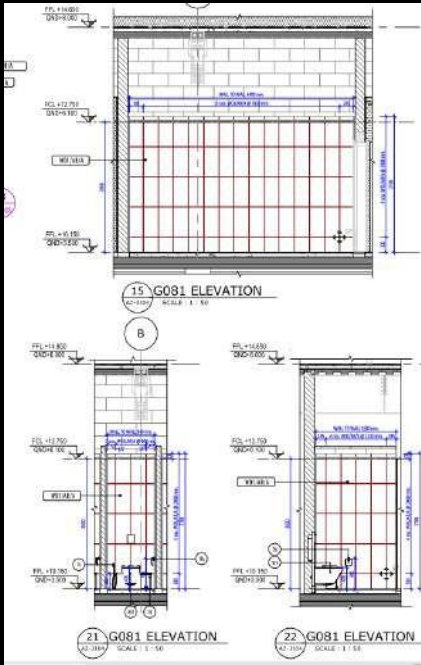
BIM MODEL



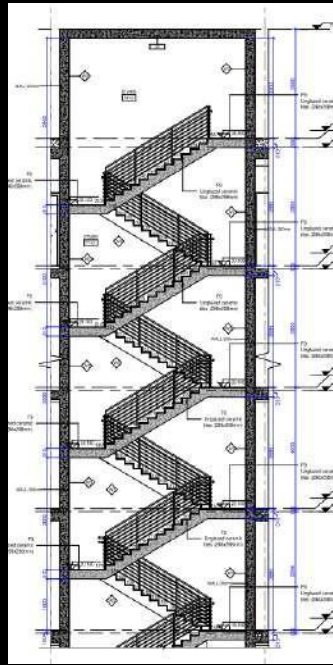
LANDSCAPE



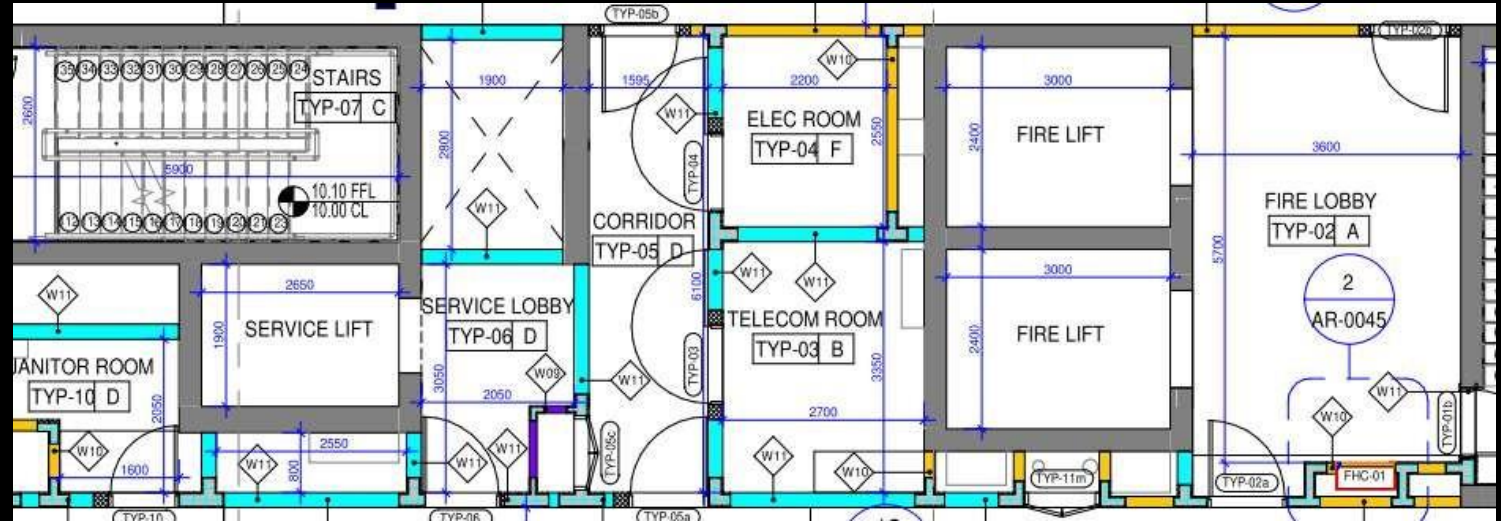
SAMPLE PROJECTS



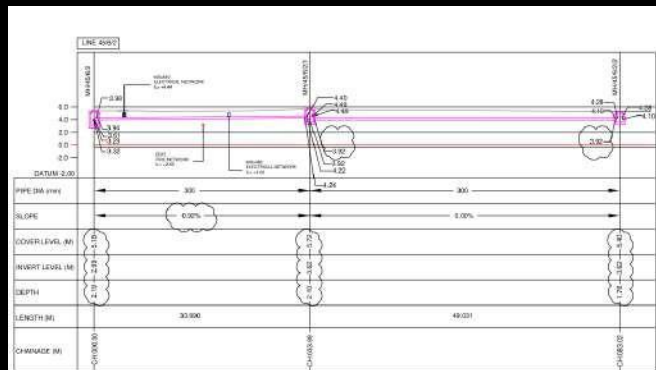
ARCH TILE LAYOUT



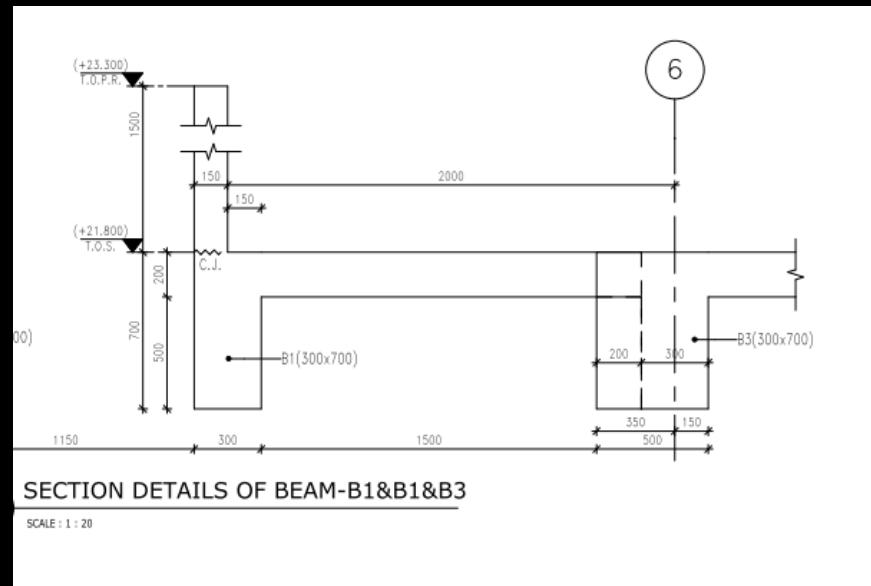
ARCH STAIRCASE



MASONRY & DRY WALL



DRAINAGE NETWORK (INFRA)

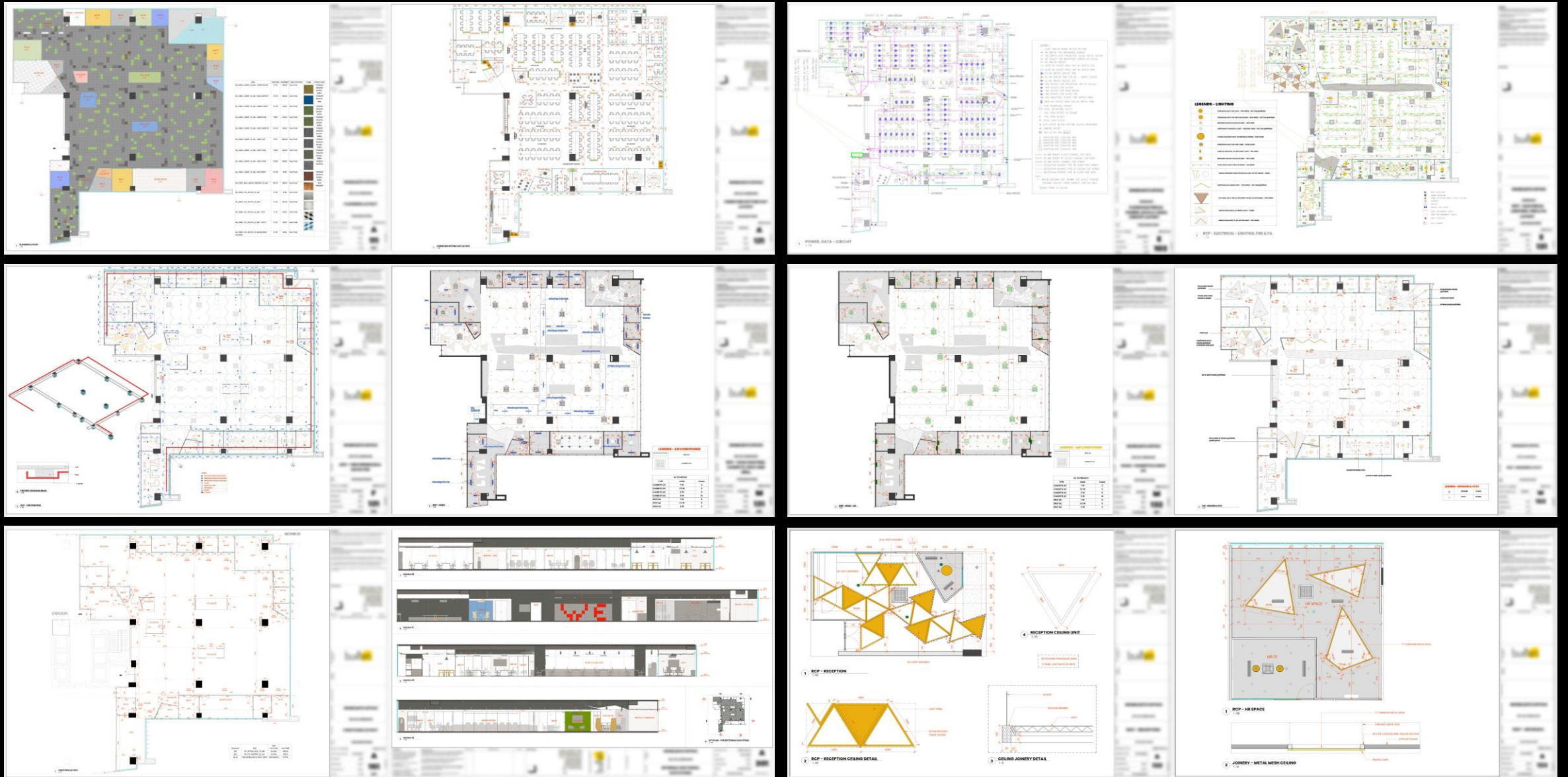


SECTION DETAILS OF BEAM-B1&B1&B3

SCALE : 1 : 20

STR BEAM SECTION DETAILS

SAMPLE PROJECTS



SAMPLE PROJECTS

1 RCP - CAFE
2 CEILING JOISTERY DETAIL 02

1 RCP - PLAY AREA
2 Detail 01

1 STORAGE 1 - MR
2 STORAGE 2 - MR
3 STORAGE 3 - MR

SHUTTERS - PERSIAN WALNUT, REST - SLATE GREY

1 FINGER GROOVE HANDLE

1 ELE - STORAGE BOARD ROOM
2 STORAGE - BOARD ROOM
3 STORAGE - MR 12
4 ELE - STORAGE MR 13
5 STORAGE - MR 14

NOTE: SAME IN MR 12
NOTE: SAME IN PLAY AREA BUT MIRRORED

SHUTTERS - PERSIAN WALNUT, REST - SLATE GREY

1 ELEVATION - LOCKER
2 LOCKER

SHUTTERS - CARDINAL RED & WHITE, REST - SLATE GREY

AREA: 1800 SQ FT
FURNITURE: QUANTITY
DINING SEAT 1 20
DINING SEAT 2 20
DINING SEAT 3 20
DINING SEAT 4 20
TOTAL CAPACITY: 40 PERSONS

ACCOMMODATION SCHEDULE

TYPE OF AREA	NO. OF SEAT	TOTAL AREA
DINING SEAT 1	20	200
DINING SEAT 2	20	200
DINING SEAT 3	20	200
DINING SEAT 4	20	200
TOTAL	80	800

EXISTING SYSTEM FLOOR PLAN PROVIDED BY SARK

LEGEND

SYMBOL	DESCRIPTION	CODE
1	LED DOWN LIGHT (300x300)	LD1
2	LED DOWN LIGHT (600x600)	LD2
3	LED DOWN LIGHT (1200x600)	LD3
4	LED DOWN LIGHT (1800x600)	LD4

FLOORING HATCHES

SYMBOL	DESCRIPTION
1	CORNER HATCH
2	WALL HATCH
3	INTERNAL HATCH
4	EXTERNAL HATCH
5	WALL HATCH
6	WALL HATCH
7	WALL HATCH
8	WALL HATCH
9	WALL HATCH
10	WALL HATCH
11	WALL HATCH
12	WALL HATCH
13	WALL HATCH
14	WALL HATCH
15	WALL HATCH
16	WALL HATCH
17	WALL HATCH
18	WALL HATCH
19	WALL HATCH
20	WALL HATCH
21	WALL HATCH
22	WALL HATCH
23	WALL HATCH
24	WALL HATCH
25	WALL HATCH
26	WALL HATCH
27	WALL HATCH
28	WALL HATCH
29	WALL HATCH
30	WALL HATCH
31	WALL HATCH
32	WALL HATCH
33	WALL HATCH
34	WALL HATCH
35	WALL HATCH
36	WALL HATCH
37	WALL HATCH
38	WALL HATCH
39	WALL HATCH
40	WALL HATCH
41	WALL HATCH
42	WALL HATCH
43	WALL HATCH
44	WALL HATCH
45	WALL HATCH
46	WALL HATCH
47	WALL HATCH
48	WALL HATCH
49	WALL HATCH
50	WALL HATCH

LEGEND

SYMBOL	DESCRIPTION	CODE
1	LED DOWN LIGHT (300x300)	LD1
2	LED DOWN LIGHT (600x600)	LD2
3	LED DOWN LIGHT (1200x600)	LD3
4	LED DOWN LIGHT (1800x600)	LD4

FLOORING HATCHES

SYMBOL	DESCRIPTION
1	CORNER HATCH
2	WALL HATCH
3	INTERNAL HATCH
4	EXTERNAL HATCH
5	WALL HATCH
6	WALL HATCH
7	WALL HATCH
8	WALL HATCH
9	WALL HATCH
10	WALL HATCH
11	WALL HATCH
12	WALL HATCH
13	WALL HATCH
14	WALL HATCH
15	WALL HATCH
16	WALL HATCH
17	WALL HATCH
18	WALL HATCH
19	WALL HATCH
20	WALL HATCH
21	WALL HATCH
22	WALL HATCH
23	WALL HATCH
24	WALL HATCH
25	WALL HATCH
26	WALL HATCH
27	WALL HATCH
28	WALL HATCH
29	WALL HATCH
30	WALL HATCH
31	WALL HATCH
32	WALL HATCH
33	WALL HATCH
34	WALL HATCH
35	WALL HATCH
36	WALL HATCH
37	WALL HATCH
38	WALL HATCH
39	WALL HATCH
40	WALL HATCH
41	WALL HATCH
42	WALL HATCH
43	WALL HATCH
44	WALL HATCH
45	WALL HATCH
46	WALL HATCH
47	WALL HATCH
48	WALL HATCH
49	WALL HATCH
50	WALL HATCH

TAGS - MATERIALS

SYMBOL	DESCRIPTION
1	WOOD
2	STONE
3	CONCRETE
4	GLASS
5	METAL
6	PLASTER
7	PAINT
8	CEILING
9	FLOORING
10	WALL
11	DOOR
12	WINDOW
13	STAIR
14	ELEVATOR
15	MECHANICAL
16	ELECTRICAL
17	TELEPHONE
18	TELEVISION
19	INTERNET
20	WATER
21	SEWER
22	VENT
23	MECHANICAL
24	ELECTRICAL
25	TELEPHONE
26	TELEVISION
27	INTERNET
28	WATER
29	SEWER
30	VENT

SAMPLE PROJECTS

Architectural drawings showing elevations and sections of a window or door assembly. The drawings include labels for materials and components, such as 'GLASS', 'FRAME', and 'SEALANT'. The elevations show the window/door in its closed position, while the sections show the internal structure and assembly details.

Architectural drawings for a project, including a plan view and a section of a window or door assembly. The plan view shows the layout of the window/door within the room, and the section shows the internal structure and assembly details. Labels include 'GLASS', 'FRAME', and 'SEALANT'.

Architectural drawings for a project, including a plan view and a section of a window or door assembly. The plan view shows the layout of the window/door within the room, and the section shows the internal structure and assembly details. Labels include 'GLASS', 'FRAME', and 'SEALANT'.

Architectural drawings for a project, including a plan view and a section of a window or door assembly. The plan view shows the layout of the window/door within the room, and the section shows the internal structure and assembly details. Labels include 'GLASS', 'FRAME', and 'SEALANT'.

Architectural drawings for a project, including a plan view and a section of a window or door assembly. The plan view shows the layout of the window/door within the room, and the section shows the internal structure and assembly details. Labels include 'GLASS', 'FRAME', and 'SEALANT'.

Architectural drawings for a project, including a plan view and a section of a window or door assembly. The plan view shows the layout of the window/door within the room, and the section shows the internal structure and assembly details. Labels include 'GLASS', 'FRAME', and 'SEALANT'.

Architectural drawings for a project, including a plan view and a section of a window or door assembly. The plan view shows the layout of the window/door within the room, and the section shows the internal structure and assembly details. Labels include 'GLASS', 'FRAME', and 'SEALANT'.

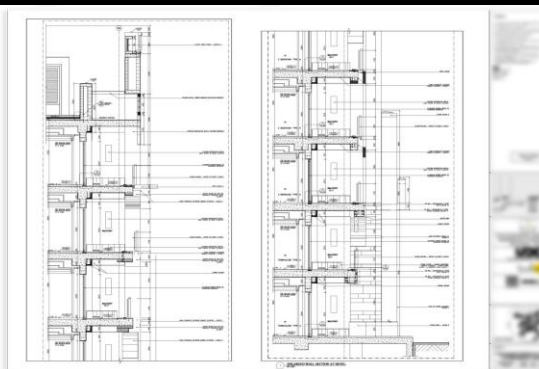
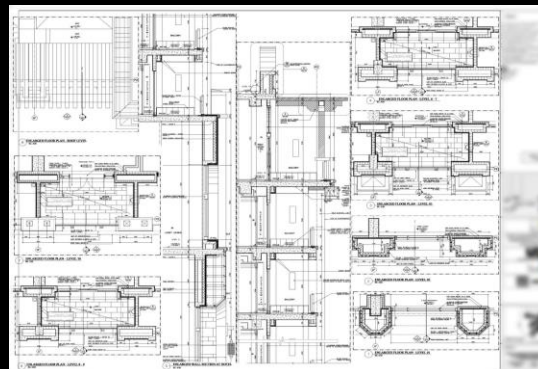
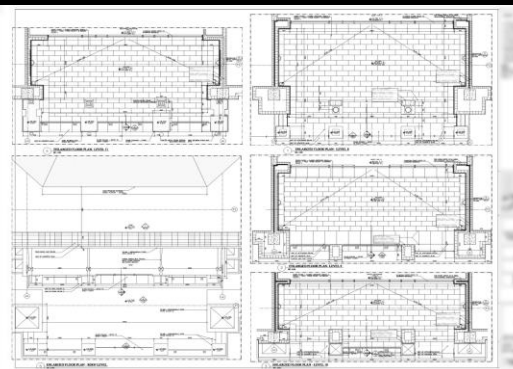
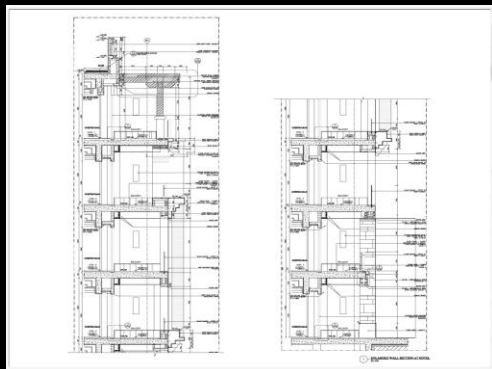
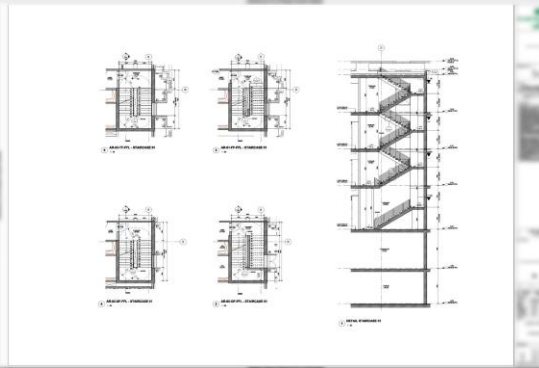
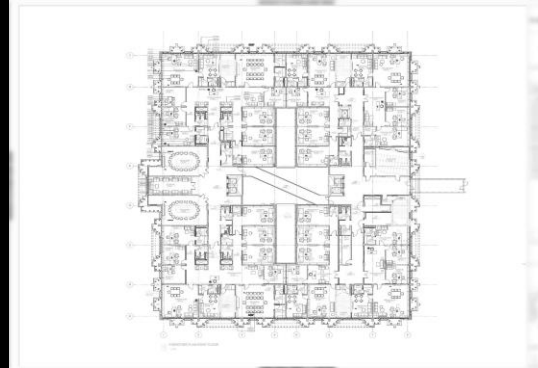
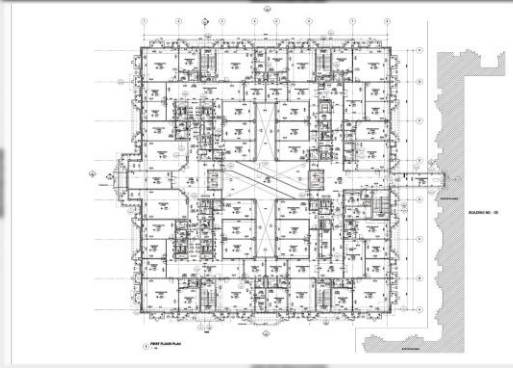
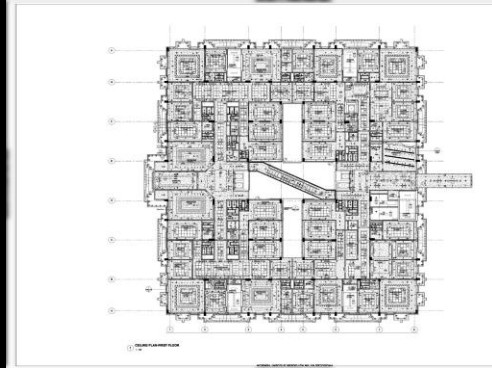
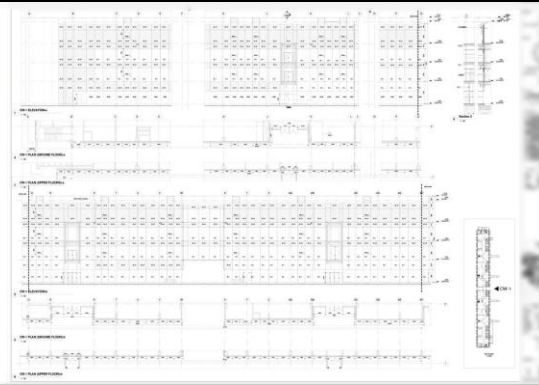
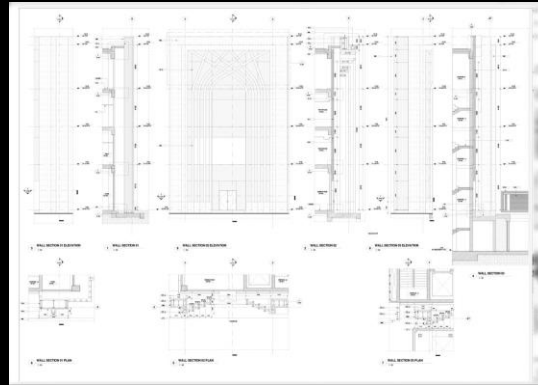
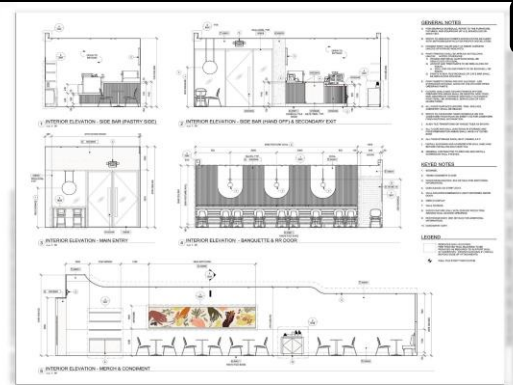
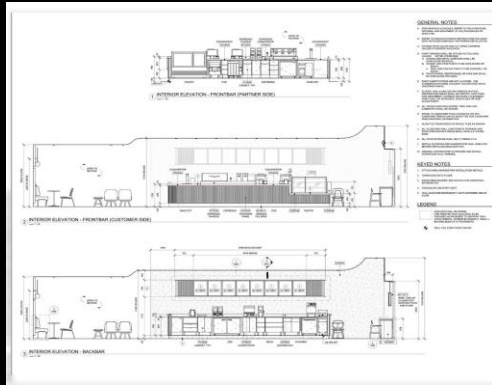
Architectural drawings for a project, including a plan view and a section of a window or door assembly. The plan view shows the layout of the window/door within the room, and the section shows the internal structure and assembly details. Labels include 'GLASS', 'FRAME', and 'SEALANT'.

Architectural drawings for a project, including a plan view and a section of a window or door assembly. The plan view shows the layout of the window/door within the room, and the section shows the internal structure and assembly details. Labels include 'GLASS', 'FRAME', and 'SEALANT'.

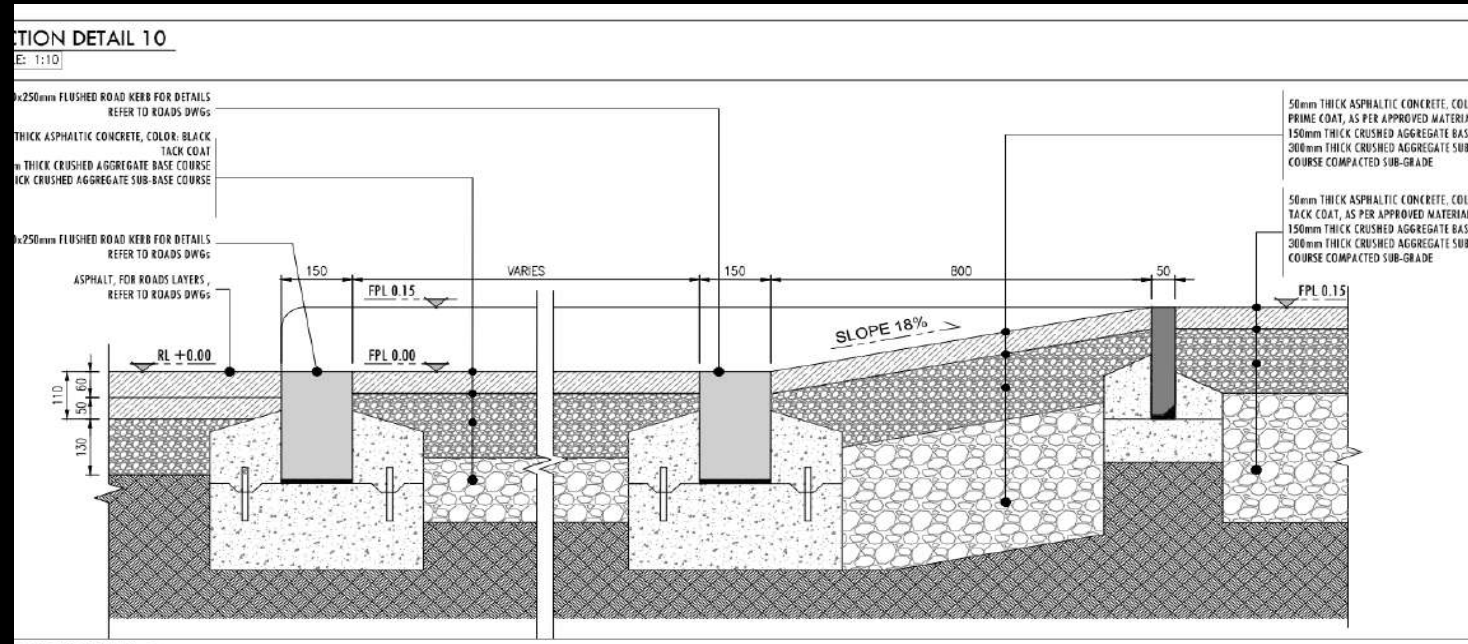
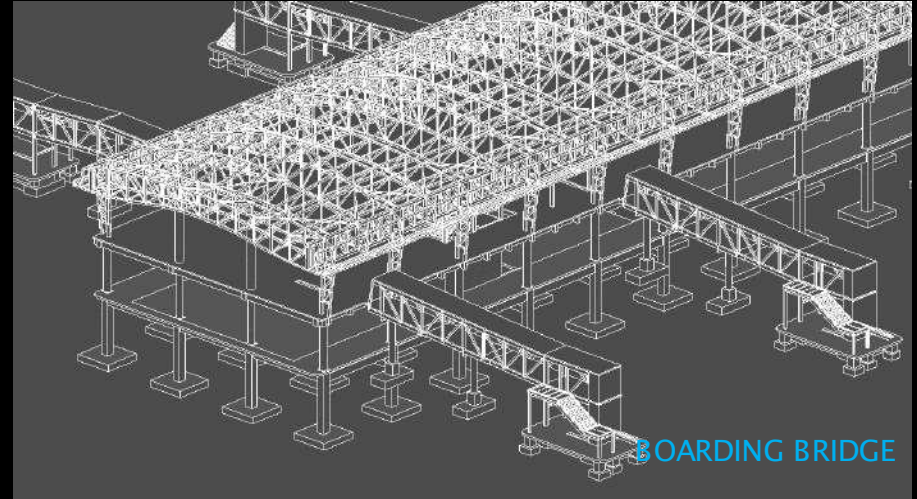
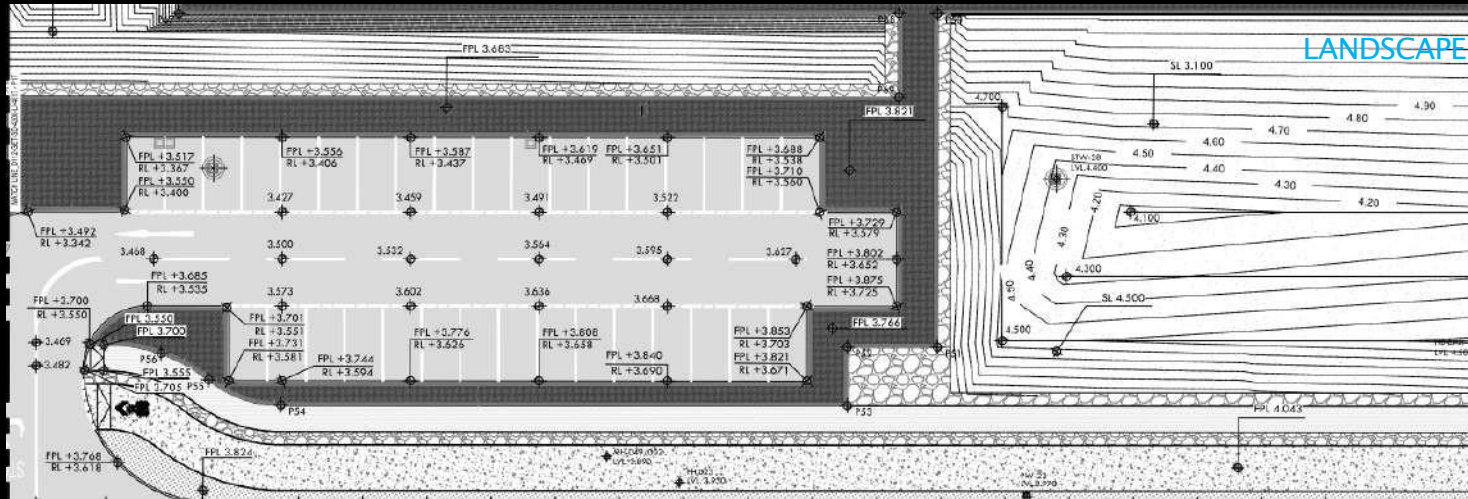
Architectural drawings for a project, including a plan view and a section of a window or door assembly. The plan view shows the layout of the window/door within the room, and the section shows the internal structure and assembly details. Labels include 'GLASS', 'FRAME', and 'SEALANT'.

Architectural drawings for a project, including a plan view and a section of a window or door assembly. The plan view shows the layout of the window/door within the room, and the section shows the internal structure and assembly details. Labels include 'GLASS', 'FRAME', and 'SEALANT'.

SAMPLE PROJECTS



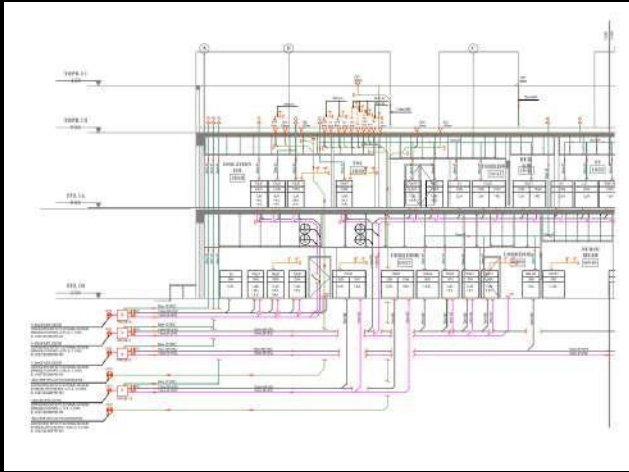
SAMPLE PROJECTS



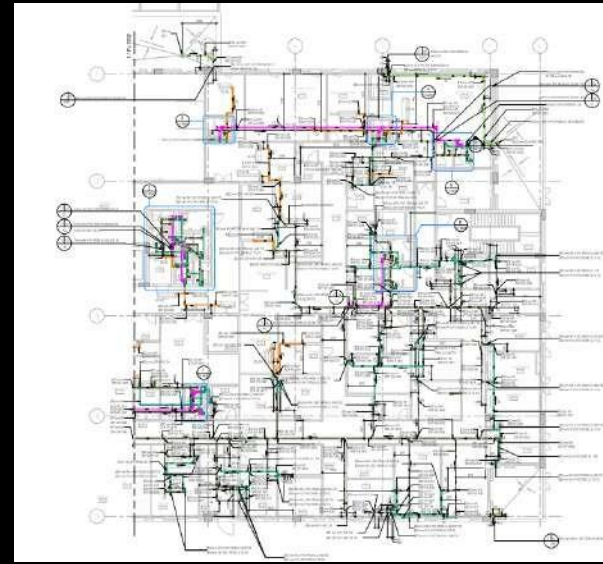
SECTION DETAIL 9
E: 1:10

LANDSCAPE

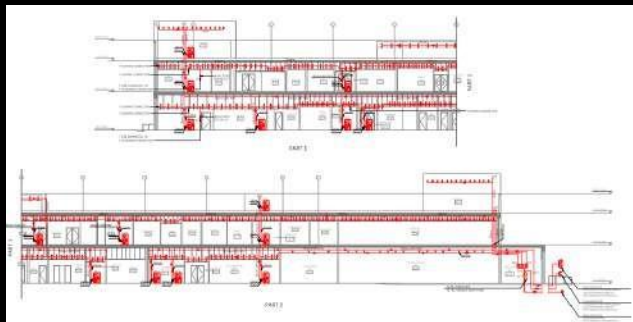
SAMPLE PROJECTS



DRAINAGE SCHEMATIC DRAWING



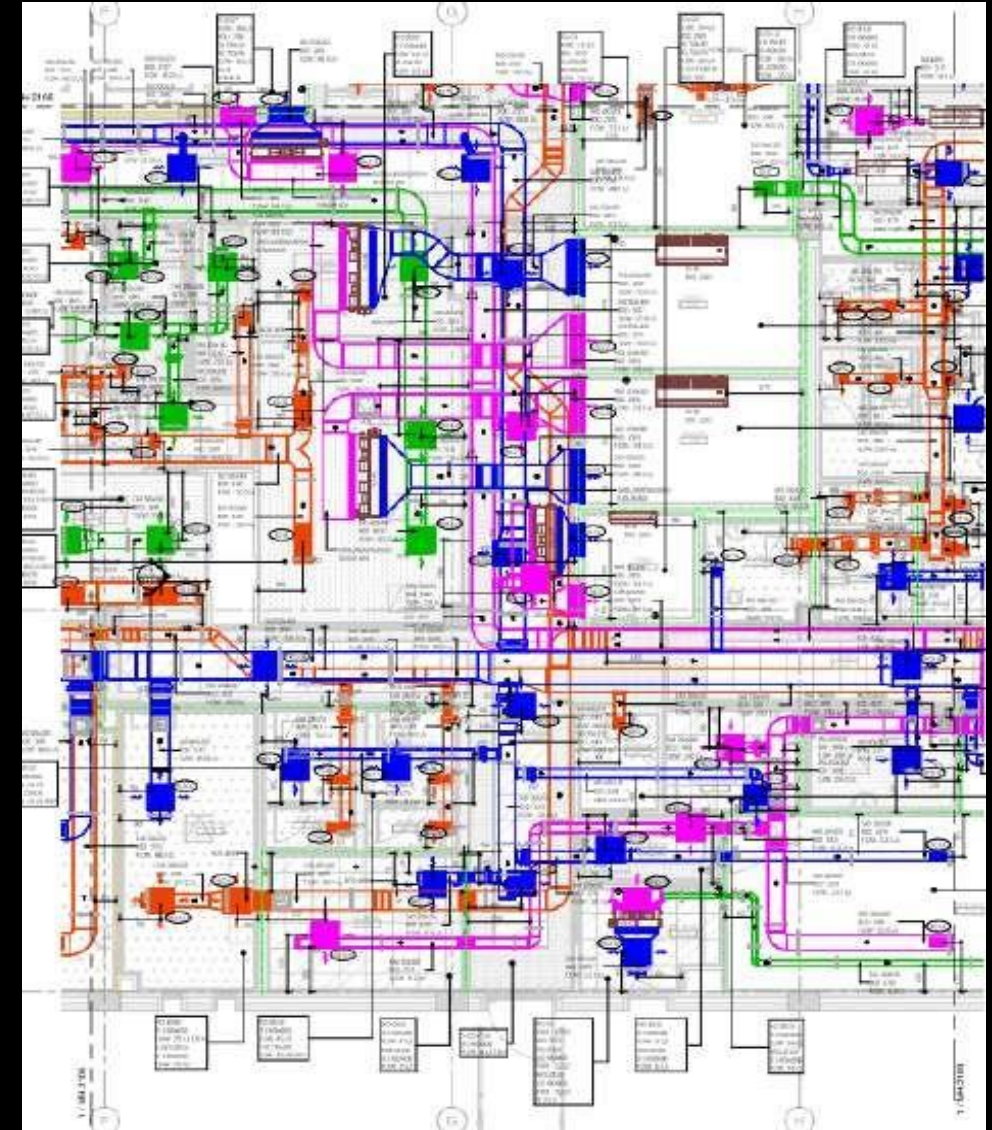
DRAINAGE SHOP DRAWING.



FIRE PROTECTION SCHEMATIC



MECHANICAL PIPING DETAIL DRAWING



HVAC SHOP DRAWING

SAMPLE PROJECTS

RESIDENTIAL PROJECT

CLASH DETECTION

REVIT NAVISWORKS

This panel displays a 3D model of a residential building. The main view shows a tall, yellow-clad structure. Two smaller inset images show internal views of the building's structure with various colored lines (red, green, blue) highlighting areas of clash between different building systems. A vertical grey bar on the right contains the text 'CLASH DETECTION'. A vertical grey bar on the left contains the text 'REVIT NAVISWORKS'.

SERVICE APARTMENTS

INTERIOR MODELING

REVIT ARCH & MEP

This panel shows a 3D model of service apartments. It includes two exterior elevation views of the building's facade. Three interior rendering images show a hallway with a blue door, a staircase with a white railing, and a modern kitchen area. A vertical grey bar on the right contains the text 'INTERIOR MODELING'. A vertical grey bar on the left contains the text 'REVIT ARCH & MEP'.

MULTI-FAMILY ARATMENT

SCHEMATIC TO 100% CD

MARKUPS- Input taken from client time to time and resolving issues in output drawings

AUTOCAD

This panel displays a set of architectural drawings for a multi-family apartment project. It includes three elevation views of the building, a section view, and several floor plans. The drawings are heavily annotated with red and blue lines, circles, and text, indicating client markups and design changes. A legend is visible on the left side of the drawings. A vertical grey bar on the right contains the text 'SCHEMATIC TO 100% CD'. A vertical grey bar on the left contains the text 'AUTOCAD'. A text box in the center-right contains the text 'MARKUPS- Input taken from client time to time and resolving issues in output drawings'.

SAMPLE PROJECTS

MULTI-FAMILY ARATMENT

NOICNSM.6 2/11

Remove from this elevation

THIS IS THE LEGEND FROM SKYVIEW!
PLEASE REPLACE WITH SKYMILLS

MARKUPS-
Input taken from client time to time and resolving issues in output drawings

AUTOCAD

SCHMATIC TO 100% CD

MULTI-FAMILY APARTMENT

Add a stair to the other side

SECTION A21-03-03
July 17th

REVIT

SCHMATIC TO 100% CD

MIXED-USE DEVELOPMENT

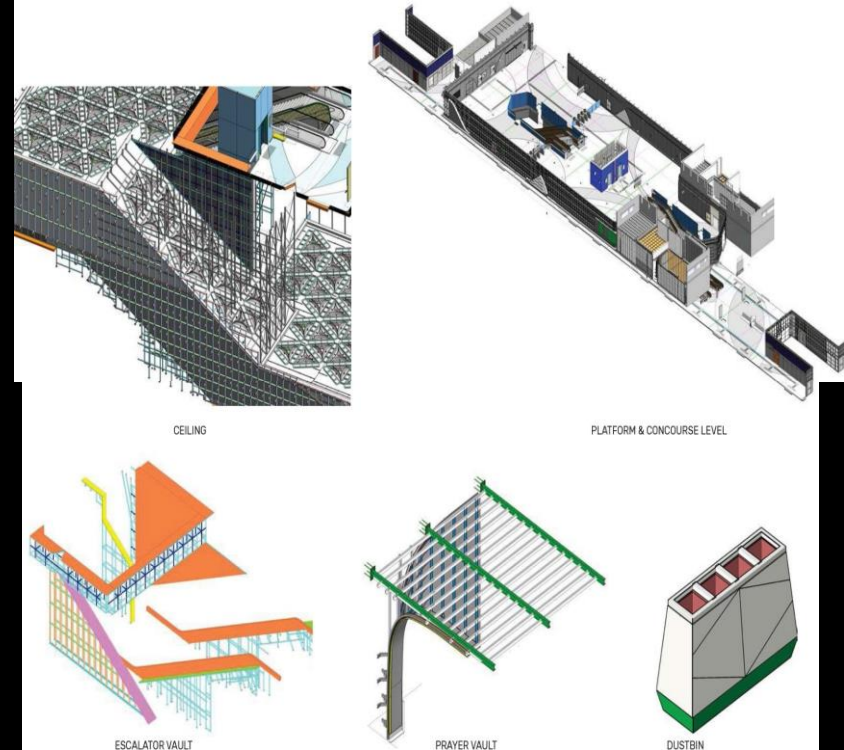
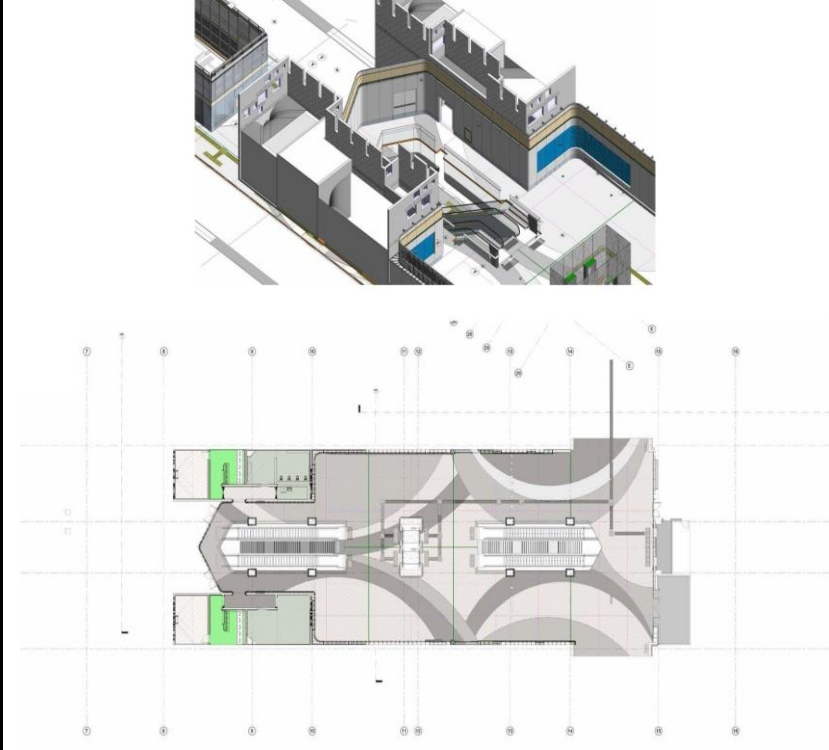
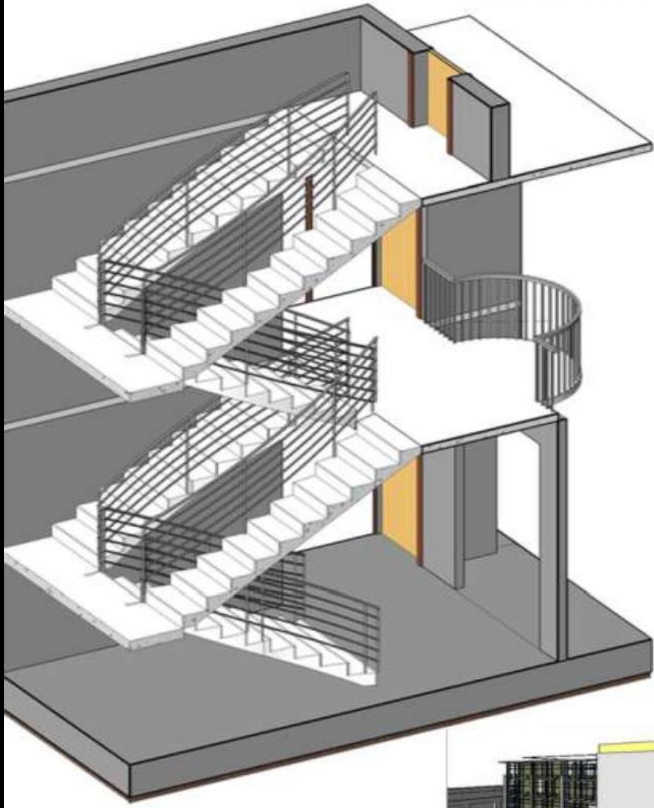
STRUCTURAL FRAMEWORK

REVIT

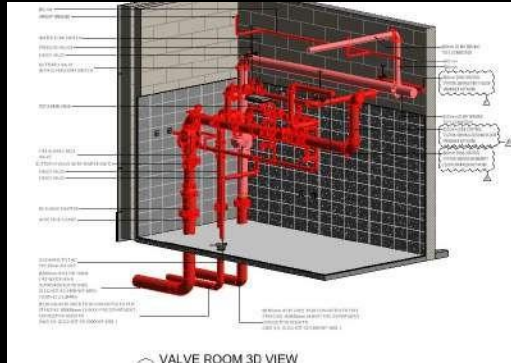
SAMPLE PROJECTS

MIXED-USE DEVELOPMENT

STRUCTURAL FRAMEWORK



SAMPLE PROJECTS



VALVE ARRANGEMENT (FIRE)



ADMIN ROOM (ARCH)



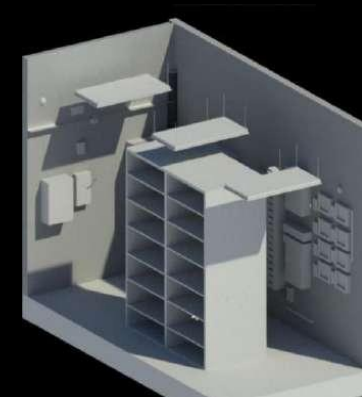
PRE FAB MEP SERVICES



MEPF SERVICES TOILET AREA



WASH ROOM (ARCH , MEPF)



SCAN TO BIM SERVER ROOM



SAMPLE PROJECTS

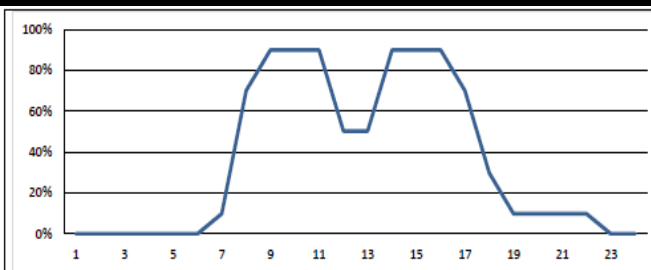
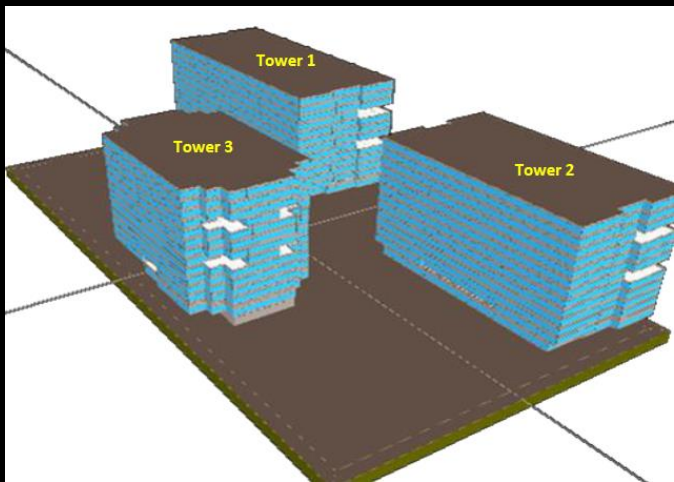


Figure 3: Building Occupancy Profile

The building is expected to be occupied 8 hours. Schedules have been modelled identically for both the Baseline and Present design. Refer Appendix A1 for all schedules.

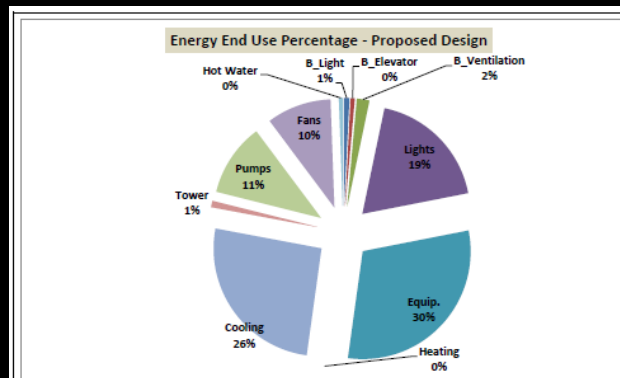
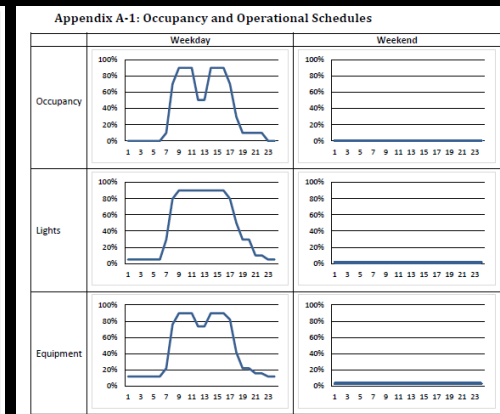


Figure 6 Energy Use Break up - Present Design

The Present design energy use is still dominated by Equipment energy. The equipment energy is 30% of the overall energy use.



Results:

Alternative	Lights	Equip.	Cooling	Heating	Pumps	Fans	Hot Water	Equipment	Equipment	Elevator	Total Energy Use (kWh/yr)	% Change over Present Design	High Peak Power (kW)	% Savings over Baseline
Present Design	1,812,002	1,870,000	1,392,490	78,520	475,220	586,820	35,840	50,000	100,000	100,000	6,140,210	-	10.0	4.4%
ECM 01 (Wall Insulation)	1,812,002	1,870,000	1,382,450	77,560	468,200	582,187	35,840	50,000	100,000	100,000	6,146,062	0.9%	10.4	5.3%
ECM 02 (AAC Block Wall)	1,812,002	1,870,000	1,371,345	76,240	457,220	565,900	35,840	50,000	100,000	100,000	6,142,279	0.7%	10.4	5.4%
ECM 03 (Glass)	1,812,002	1,870,000	1,354,475	75,770	453,140	553,140	35,840	50,000	100,000	100,000	6,139,720	1.2%	10.3	6.1%
ECM 04 (Lighting LED Reduction)	823,176	1,870,000	1,341,437	76,450	457,234	572,800	35,840	40,000	100,000	100,000	6,104,000	5.5%	17.0	10.0%
ECM 05 (Lighting LED Reduction)	823,176	1,870,000	1,337,435	75,520	448,432	568,432	35,840	35,000	100,000	100,000	6,092,423	8.0%	17.0	13.0%
ECM 06 (HVAC Fan Power)	1,812,002	1,870,000	1,331,096	77,330	443,138	426,140	35,840	50,000	100,000	100,000	6,082,607	4.9%	17.0	8.6%
ECM 07 (Efficient Chiller)	1,812,002	1,870,000	1,342,066	76,770	474,930	584,830	35,840	50,000	100,000	100,000	6,133,860	0.8%	10.3	5.7%
ECM Package 01 (ECM 02, 03, 04, 05, 06 and 7)	823,176	1,870,000	1,337,437	75,520	448,432	568,432	35,840	35,000	100,000	100,000	6,092,423	14.5%	10.0	18.7%
ECM Package 02 (ECM 01, 02, 03, 04, 05, 06 and 7)	823,176	1,870,000	1,412,340	76,880	467,207	465,320	35,840	35,000	100,000	100,000	6,104,000	12.8%	10.0	17.0%

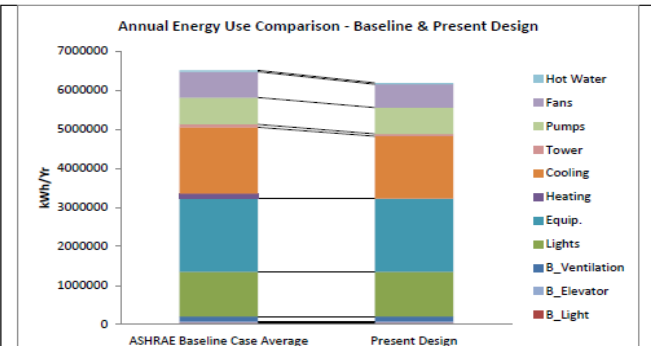


Figure 4 Annual Energy Use Comparison

The Present building consumes 4.9% less energy than baseline case. This much amount of energy saving is not sufficient to get any credits points.

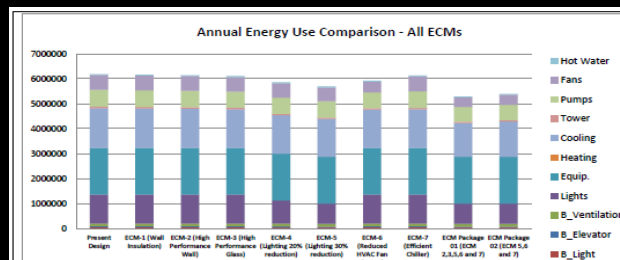


Figure 7 Annual Energy Use Comparison - All ECMs

The energy saving can be achieved over present design through efficient glazing material property, reduction in LPD and efficient HVAC system.

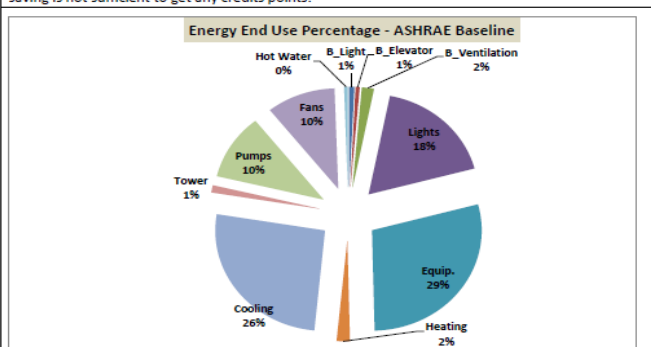


Figure 5 Energy Use Break up - ASHRAE Baseline

The Baseline energy use is dominated by Equipment energy. The equipment energy is 29% of the overall energy use.

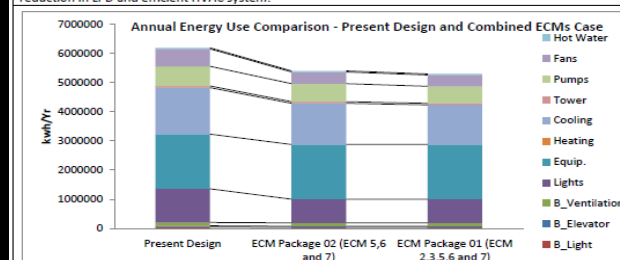
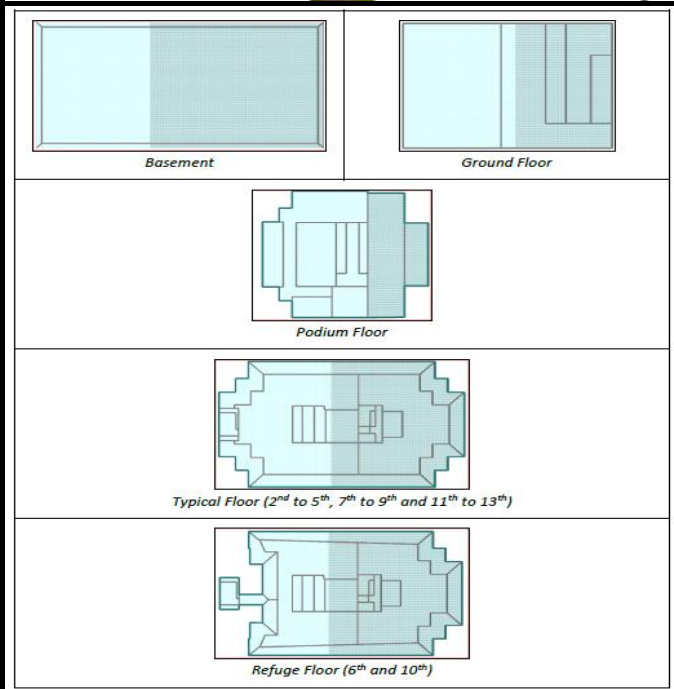


Figure 8 Annual Energy Consumption - Present Design v/s Combined ECM Package 01 and 02

The combined ECM Package 01 having AAC block as wall material, glass (U-value 0.33 BTU/hr sqft deg F and SHGC: 0.3), LPD 30% less than baseline case, reduced fan power (0.0007 kW/cfm) and efficient chillers (COP 6.3) provide 14.5% energy saving over present design and 18.7% saving over baseline case.

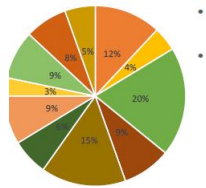
The combined ECM Package 02 having LPD 30% less than baseline case, reduced fan power (0.0007 kW/cfm) and efficient chillers (COP 6.3) provide 12.8% energy saving over present design and 17.1% saving over baseline case.



SAMPLE PROJECTS

05. Sustainability

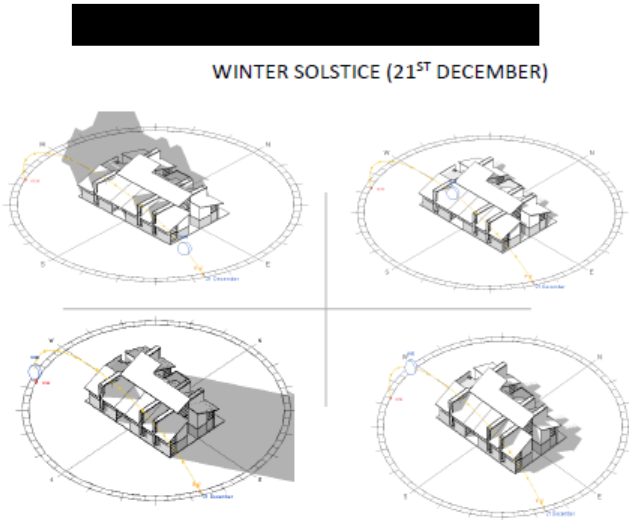
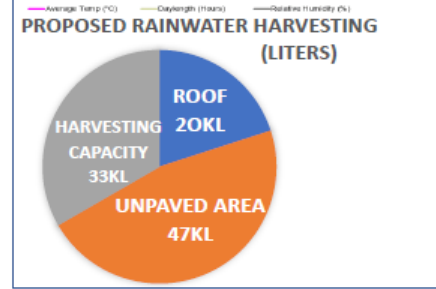
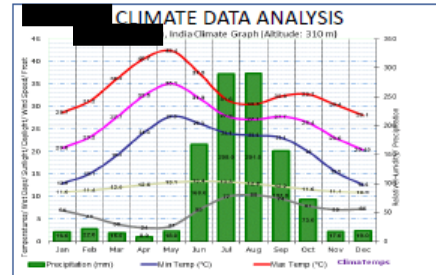
Section	Criterion No.	Criterion Name	Maximum Points
1. Sustainable Site Planning	1	Green Infrastructure	4
	2	Low Impact Design (3 Passive Design Techniques- Orientation, Massing, Shading Devices, Water Bodies)	5
	3	Design to Mitigate UHIE	2
2. Construction Management	4	Air and Soil Pollution Control	1
	5	Top Soil Preservation	1
	6	Construction Management Practices	2
3. Energy Efficiency	7	Energy Optimization	12
	8	Renewable Energy Utilization	5
4. Occupant Comfort	9	Low ODP and GWP Materials	1
	10	Visual Comfort (Alternative 2)	4
	11	Thermal and Acoustic Comfort	0
5. Water Management	12	Maintaining Good IAQ	4
	13	Water Demand Reduction	4
6. Solid Waste Management	14	Wastewater Treatment	1
	15	Rainwater Management	5
7. Sustainable Building Materials	16	Water Quality and Self-Sufficiency	4
	17	Waste Management-Post Occupancy	4
	18	Organic Waste Treatment On-Site	2
8. Life Cycle Costing	19	Utilization of Alternative Materials in Building	3
	20	Reduction in GWP through Life Cycle Assessment	3
9. Socio-Economic Strategies	21	Alternative Materials for External Site Development	2
	22	Life Cycle Cost Analysis	3
	23	Safety and Sanitation for Construction Workers	1
10. Performance Metering and Monitoring	24	Universal Accessibility	2
	25	Dedicated Facilities for Service Staff	2
	26	Positive Social Impact	3
11. Innovation	27	Commissioning for Final Rating	0
	28	Smart Metering and Monitoring	7
	29	Operation and Maintenance Protocol	0
Total Points			87
Proposed Innovation			5
(PROPOSED FOR ★★★★★)			87 + 5



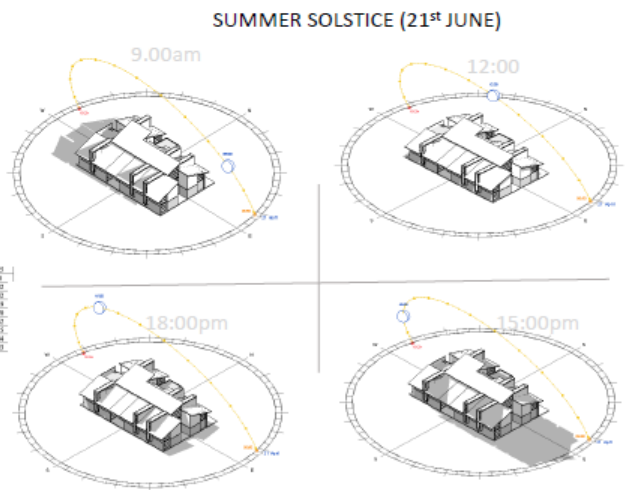
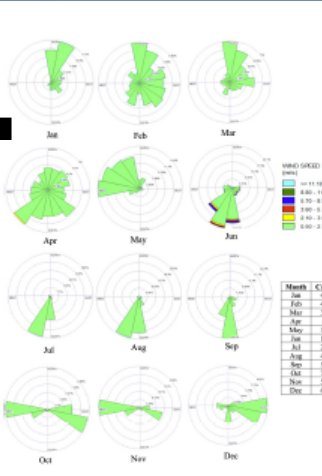
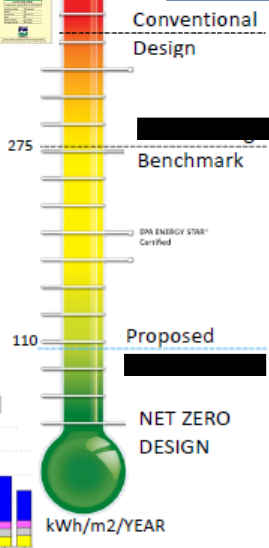
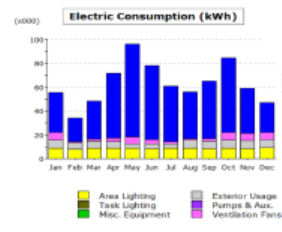
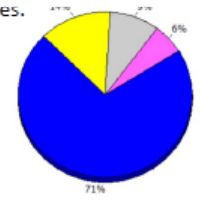
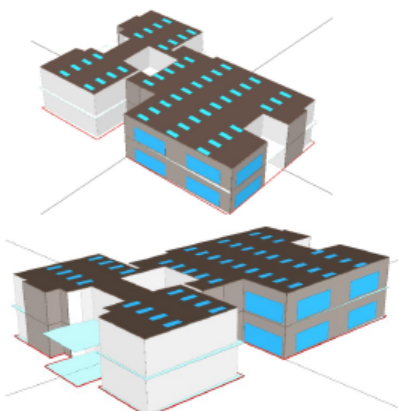
WINDOW TO WALL RATIO
 *As part of the Sustainable Strategy, Window to Wall Ratio is limited to 30% and below 60% on East and West Side
 *Use of insulated Double Glass Low-e Window Technology to avoid Solar Heat gain inside



INTEGRATED SOLAR ROOF-TOP TECHNOLOGY
 12-15% Net Energy Optimization and savings using MONOCRYSTALLINE SOLAR PV TECH



technologies and green construction practices.



LIST OF SOME OF OUR MAJOR BIM LOD PROJECTS

60K+ SQM

S.No.	Location	LOD LEVEL	Services	CAD Software
1	Middle East *	LOD 200, 350	MEP & Structural	Revit
2	Canada	300	Arch. & Str.	Revit, AutoCAD
3	India	300	structural & MEP	Revit
4	India	200 & 300	structural & MEP	Revit
5	India	200 & 300	Structural	Revit
6	India	300 & 400	structural & MEP	Revit
7	Bahrain	300 & 400	MEP	Revit
8	Qatar	300 & 400	MEP & Structural	Revit
9	India	200 & 300	MEP & Structural	Revit
10	UAE	200, 350 and 400	MEP & Structural	Revit, AutoCAD
11	India	200 & 300	structural & MEP	Revit
12	Middle East *	300 & 400	structural & MEP	Revit

* Confidential

LIST OF SOME OF OUR MAJOR DESIGN PROJECTS

S.No.	Project Title	Location	Scope of Work	Design Software
1	Downhole tools Design & Analysis	India ; Algeria	Non-linear FEA - Buckling & failure modes; Design optimization	ANSYS; Solid works
2	Early Production Facility (EPF-120)	North Kuwait	Plant 3D modeling; Pumps sizing calculations; material selection diagram; flare header sizing; separator sizing & ASME Design (PV Elite)	Plant 3D; Navisworks; PV Elite
3	EPC - ClO2 Dis-infection plant	Kuwait	Plant 3D; Design of Containerized modular building; Equipment skid design	Plant 3D; Solidworks; MS Excel
4	Dis-infection system - Reservoir Complex	Mutla High, Kuwait	Plant 3D; pumps sizing calcs; skid design; tanks sizing calcs	Plant 3D; Solidworks; MS Excel
5	FeCl3 production plant	Mina Shuaiba Refinery, Kuwait	Plant 3D of FeCl3 production plant; Staad Pro Structural Analysis; modifications analysis; As-built	Plant 3D; Navisworks; Staad Pro
6	Drilling Mud Plant	Burgan, Kuwait	Mud Tanks system design & layout; Concrete base slab design; Warehouse design; FEA Staad Pro Analysis - base slab, foundation, warehouse structure	Solidworks; Staad Pro; AutoCAD
7	Portable Mini Mud Plant.	Shuaiba, Kuwait	Design of mobile equipment; tank design calcs; pumps calcs	Solidworks; MS Excel
8	Convection heater refurbishment	Kuwait	ASME Design of coiled tube heater for crude oil (PV Elite; Compress)	PV Elite; Compress
9	Boiler Chimney & Economizer	Sabhan, Kuwait	Chimney & Economizer design (PV Elite)	PV Elite; Compress
10	Pig L/R & handling Equipment	North Kuwait (GC)	Design of Pig L/R as per ASME; Design of handling equipment in 3D	PV Elite; Solid works
11	Drilling mud system, including Silos	North Kuwait	Design of double skin tanks; pumping, recirculation & filtration system	Solid works
12	Truck mounted hydraulic slick-line mast winch	Assam, India	Truck mounted hydraulic slick-line mast winch	Solidworks; FEA Simulation
13	Cuttings Re-injection and HP Triplex Pumping System	West Siberia, Russia	Cuttings Re-injection and HP Triplex Pumping System	Solidworks; FEA Simulation
14	Design, manufacturing & installation of CRI, dewatering unit & mud system on SARB Islands	Abu Dhabi, UAE	Design, manufacturing & installation of CRI, dewatering unit & mud system on SARB Islands	Solidworks; FEA Simulation
15	Fabrication and Installation of TCC Process Equipment	Incahassi, Bolivia	Fabrication and Installation of TCC Process Equipment	Solidworks; FEA Simulation
16	Complete Design, Fabrication, Rig-up, & Installation of TPS Drilling waste treatment system.	Hassi-Messaoud, Algeria	Complete Design, Fabrication, Rig-up, & Installation of TPS Drilling waste treatment system.	Solid works; FEA Simulation

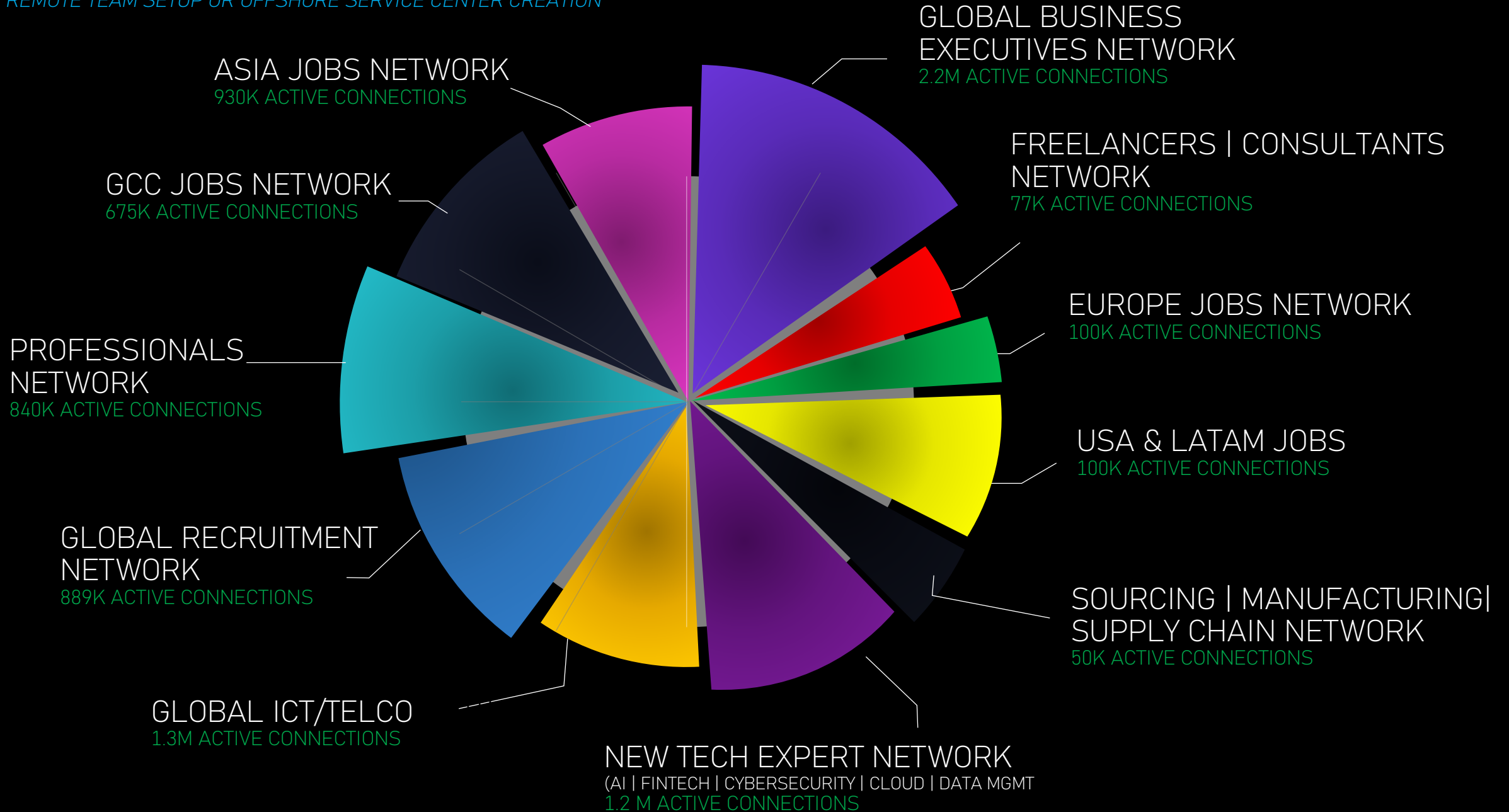
OUR PARTNERSHIPS & COLLABORATIONS WITHIN RECRUITMENTS

FOR REMOTE TEAM SETUP OR OFFSHORE SERVICE CENTER CREATION



OUR ACTIVE & EXPANDING RECRUITMENT NETWORK (5M+)

FOR REMOTE TEAM SETUP OR OFFSHORE SERVICE CENTER CREATION



CONTACT US TODAY!



UNIT 1603, 16TH FLOOR, THE L. PLAZA, 367 - 375
QUEEN'S ROAD CENTRAL, SHEUNG WAN, HONG KONG.



services@sjsglobalsolns.com

YOUR SEARCH FOR AN OFFSHORE PARTNER ENDS HERE!

